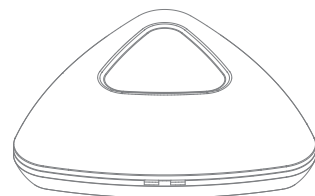
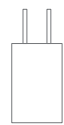


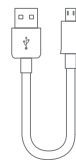
■ Package Content



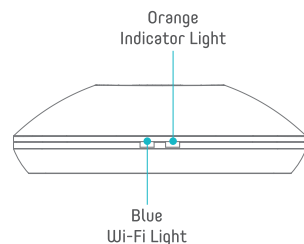
MIOCR001



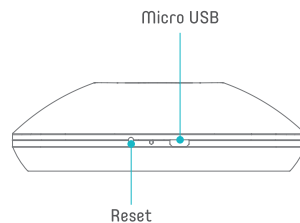
AC/DC Adapter



USB Cable



Front



Right Side

■ FAQ

❓ Instruction of Wi-Fi indicator

- Indicator flashes quickly
It means device is in factory state and you can configure it via config page of e Smart Home.
- Indicator flashes from quickly to slowly and at last off (during configuration).
It means configuration is successful.
- Indicator flashes slowly
It means device cannot connect to Wi-Fi. Please check the network connection or re-configure the device.

❓ Functions of universal remote

- Remote control, button timer (long press ON/OFF button to set timer) and combo control.

❓ What is scene?

- Scene likes a button which perform several actions of several appliances. You can add several remote commands into a scene and once you tap the scene, all the remote commands will be performed.

❓ How to learn?

- Tap the button with black font and it will pop-up a prompt box 'Waiting for button learning'. Meanwhile, orange indicator of device will be on. Press ON/OFF button on appliance remote towards device. If the orange indicator turns to off state and APP hints successful message, the code learning succeeds. Tap the learned button on APP and the orange indicator flashes once. It means the learned command has been sent.

❓ How to perform air conditioner learning?

- AC codes is more complicated than TV code. One button will trigger a string of code including temperature, mode, fan, and so on. As a result, defined scene button such as cooling, heating, auto is similar to ON button. For instance, if you want to learn the code string of ON, cooling and 22 °C . You should follow the step below.
 1. Adjust AC to 'cooling, 22 °C' with AC remote.
 2. Turn off AC.
 3. Tap a button on remote panel (APP) to enter learning state.
Press 'ON' button of AC remote to finish learning. For the 'OFF' button, it can be learned on any state (You should learn 'ON' and 'OFF' separately).
We suggest you to have a trial to comprehend this part.

■ NOTE

- Do not use non-ASCII characters in Wi-Fi name or password. It may cause configuration failure. The device supports Wi-Fi of 2.4G 802.11 b/g/n only.
- Please place the device on open place. Please point remote to the top of the device during learning we suggest the distance is less than 1m.
- Please configure the device according the user guide. If you encounter problems, please contact our authorized distributors or our support team.

EN

muviT I/O

my Universal
Remote
Quick User Guide

Customer Service Hotline

902 19 19 00

Website: www.ascendeoiberia.com

Service: iot@ascendeoiberia.com

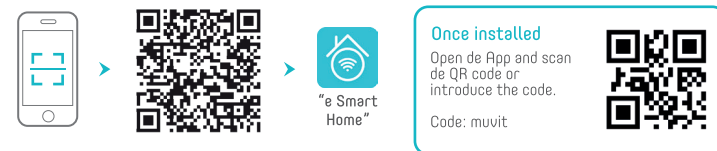
ascendeo Iberia, S.L.

Add: C/ Les Planes, 2 - 4, Polígono Font Santa
08970 Sant Joan Despí, Barcelona

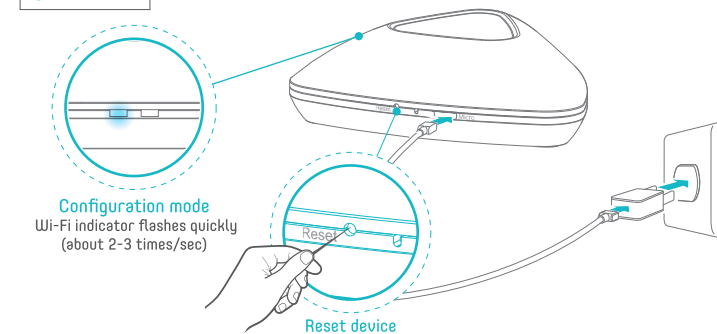
■ Usage Scenario

① Install APP

Search "e Smart Home" on Apple App Store or Google Play Store, download and install it.



② Power on

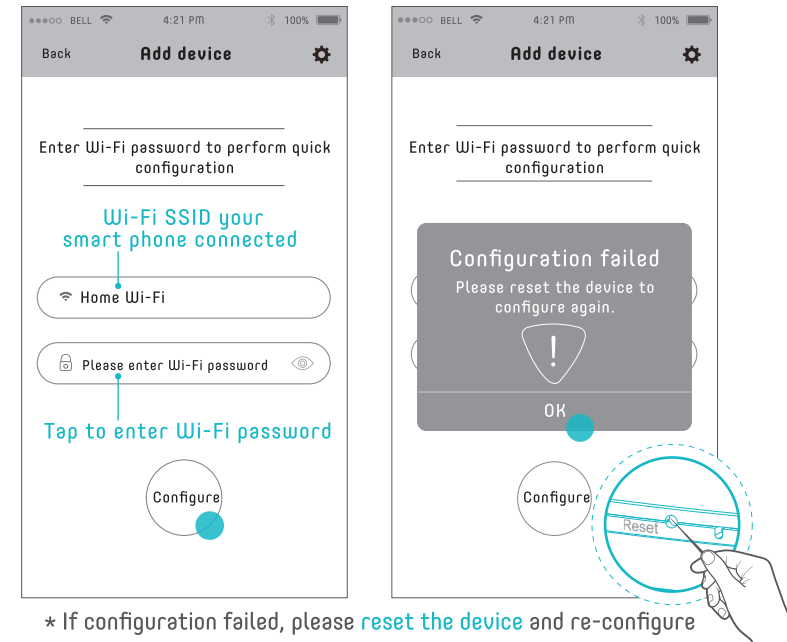


③ Connect smart phone to Wi-Fi

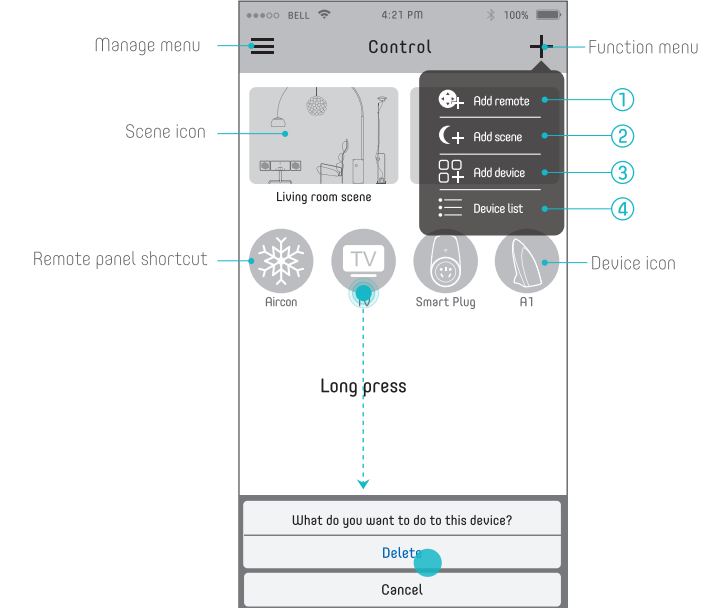


④ Open e-Control APP

■ Add Device

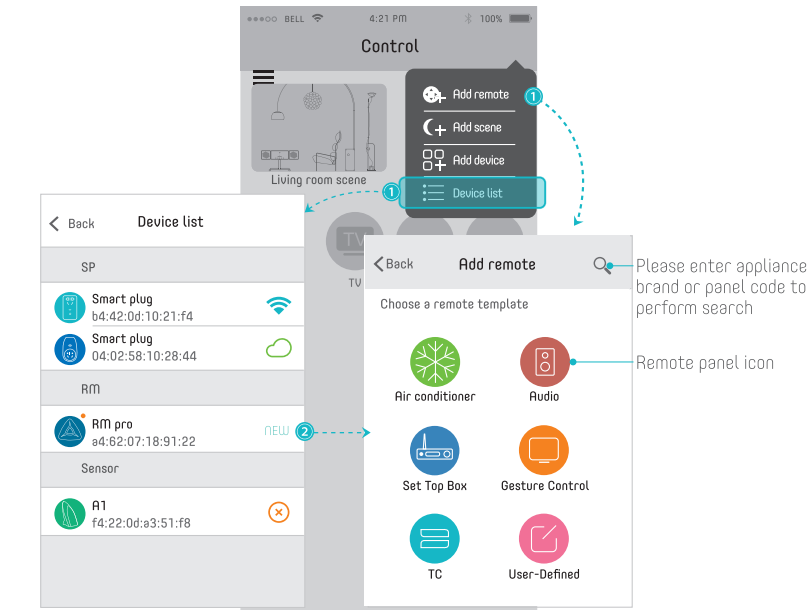


■ Control Panel



- ① Tap to add remote control panel
- ② Tap to add scene
- ③ Tap to add device
- ④ Tap to view added devices

■ Add Remote



- NEW** New device Newly added device
- Local** Device connects with the Wi-Fi smart phone connects.
- Remote** Device is online remotely and can be controlled remotely.
- Offline** Device is offline and out of control. Please check the network connection.